

FLEX - PLUS 1900-6000

Led Strip



Alimentazione / Operating Voltage	24 V
Potenza / Power	20 W/mt
Larghezza Pcb / Width Pcb	10 mm
Altezza / Height Stripe	2 mm
Lunghezza / Length Stripe	5000 mm
Taglio segmento/ Length per Cut	50 mm
N° LED	120 / mt
IP	20
Temperatura esercizio Storage Temperature	- 30° C - + 70°C
Lifetime	L70B20 50000H

	Flusso Luminoso Luminous Flux	Efficienza Efficiency	Colore Luce Led Color
DA-PLUS-1900-6000	1863 lm/mt	135 lm/W	6000 K



Via Cadorna, 40/42
20032 Cormano (MI)
Tel. +39 02 84269630
Fax +39 02 84269631
info@dadalighting.com
www.dadalighting.com

FLEX - PLUS 1900-6000
Led Strip

Light efficiency:



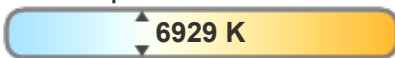
Output: 1863 lm

Light quality:

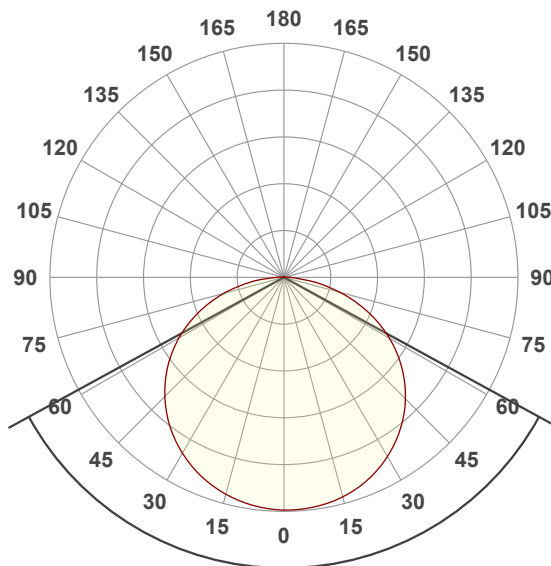


Peak: 575 cd

Color temperature:



Power: 20,0 W
24,0V @ 0,833A

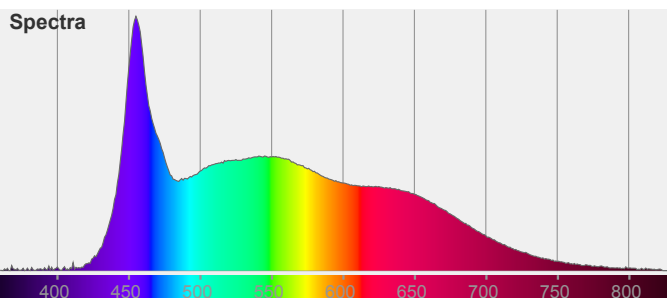


Beam angle **122,7°**

Color

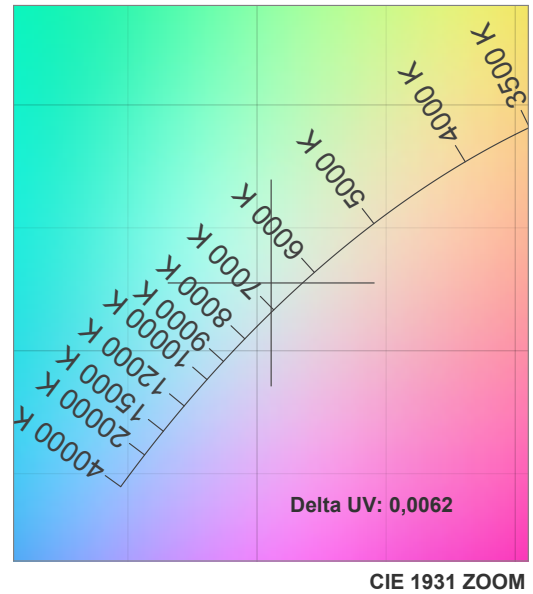
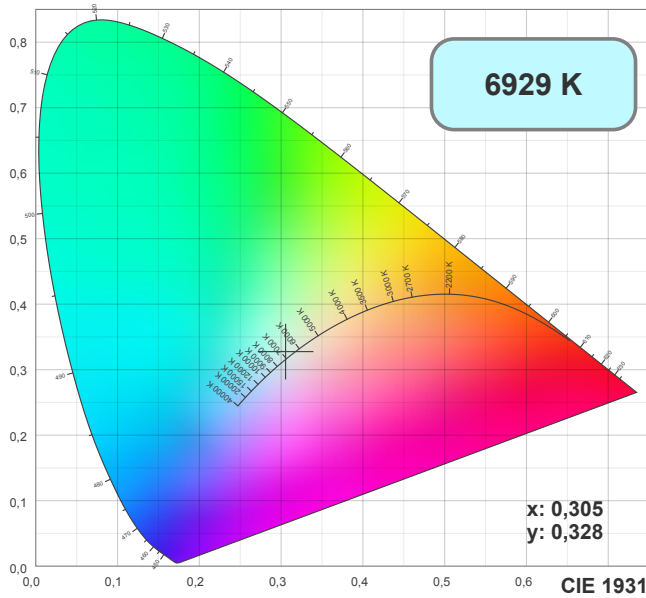


CIE1931
x: 0,305
y: 0,328

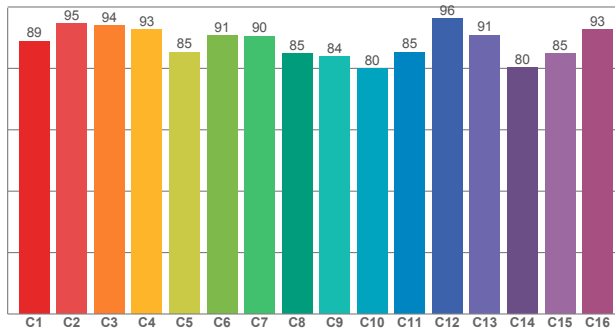


FLEX - PLUS 1900-6000

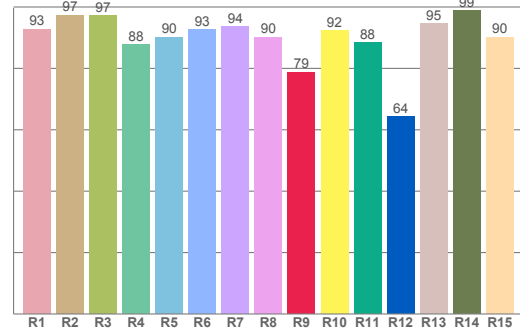
Led Strip



TM30: 88,4



CRI: 92,7 (R1-R8)



CRI R values, only R1-R8 are used to calculate final CRI value

R1	R2	R3	R4	R5	R6	R7	R8	R9	R10	R11	R12	R13	R14	R15
92,81	97,36	97,22	87,70	90,17	92,57	93,52	90,14	78,72	92,38	88,43	64,19	94,61	98,88	90,22

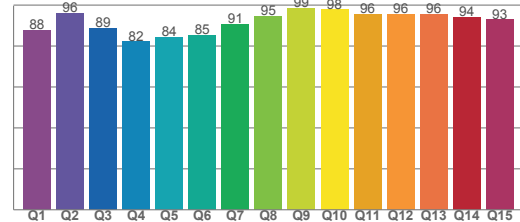
TM30 C values, 16 binned values out of total of 99 C values

C1	C2	C3	C4	C5	C6	C7	C8	C9	C10	C11	C12	C13	C14	C15	C16
88,92	94,55	93,97	92,68	85,22	90,62	90,45	84,71	83,89	80,00	85,32	96,15	90,82	80,32	84,71	92,60

CQS Q values

Q1	Q2	Q3	Q4	Q5	Q6	Q7	Q8	Q9	Q10	Q11	Q12	Q13	Q14	Q15
87,80	96,07	88,90	82,16	84,40	85,44	90,85	94,65	98,58	97,81	95,57	95,70	95,66	94,10	92,94

CQS: 90,6

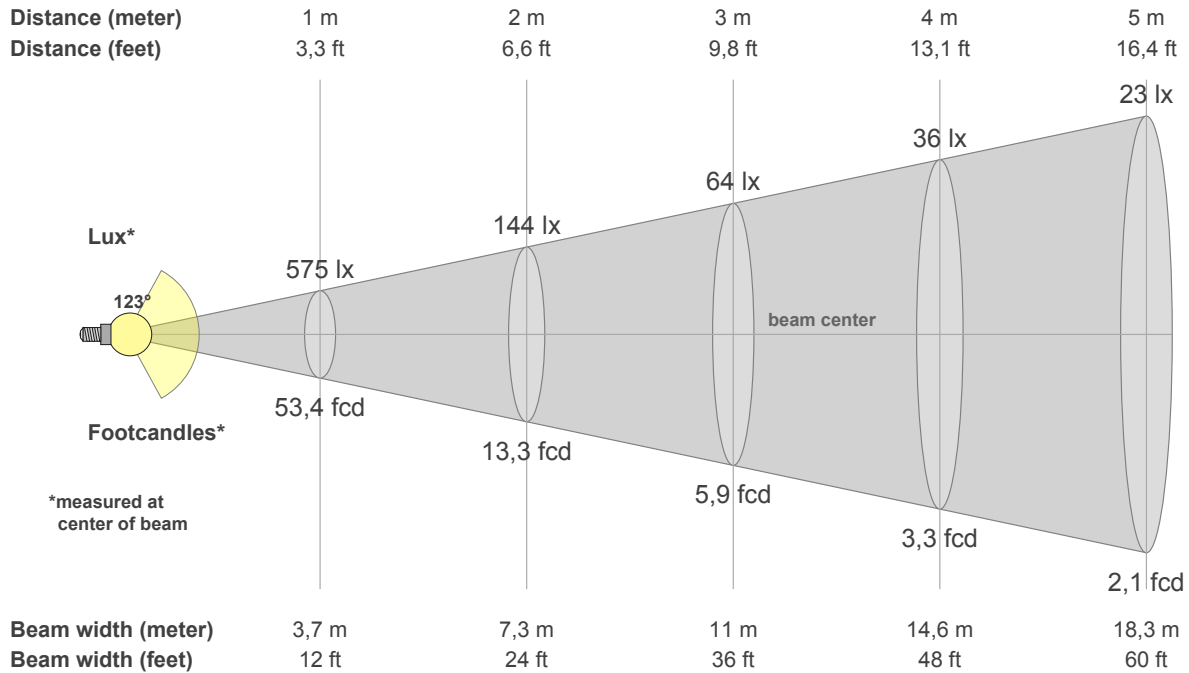


Color parameters

CCT	CRI	CRI R9	TM30 Rf	TM30 Rg	CQS	x	y	u	v	Duv
6929 K	92,7	78,7	88,4	95,5	90,6	0,3	0,3	0,2	0,3	0,0030

FLEX - PLUS 1900-6000

Led Strip



Intensities in 0° c-plane

0°	5°	10°	15°	20°	25°	30°	35°	40°	45°	50°	55°	60°	65°	70°	75°	80°	85°	90°	95°
575	574	569	561	549	532	511	486	457	424	387	346	300	252	199	144	90	44	16	1
100%	100%	99%	98%	96%	92%	89%	85%	79%	74%	67%	60%	52%	44%	35%	25%	16%	8%	3%	0%

Intensities in 0° c-plane

0°	5°	10°	15°	20°	25°	30°	35°	40°	45°	50°	55°	60°	65°	70°	75°	80°	85°	90°	95°
575	574	569	561	549	532	511	486	457	424	387	346	300	252	199	144	90	44	16	1
100%	100%	99%	98%	96%	92%	89%	85%	79%	74%	67%	60%	52%	44%	35%	25%	16%	8%	3%	0%

Intensities in 180° c-plane

0°	5°	10°	15°	20°	25°	30°	35°	40°	45°	50°	55°	60°	65°	70°	75°	80°	85°	90°	95°
575	571	565	555	540	523	502	476	448	416	380	341	300	253	205	155	104	58	19	6
100%	99%	98%	96%	94%	91%	87%	83%	78%	72%	66%	59%	52%	44%	36%	27%	18%	10%	3%	1%

Intensities in 180° c-plane

0°	5°	10°	15°	20°	25°	30°	35°	40°	45°	50°	55°	60°	65°	70°	75°	80°	85°	90°	95°
575	571	565	555	540	523	502	476	448	416	380	341	300	253	205	155	104	58	19	6
100%	99%	98%	96%	94%	91%	87%	83%	78%	72%	66%	59%	52%	44%	36%	27%	18%	10%	3%	1%

Beam angle 50%	Field angle 10%	Cutoff angle 2,5%	Intensity ratio in 120° cone	Intensity ratio in 90° cone
122,7°	168,7°	182,1°	74,5%	49,3%